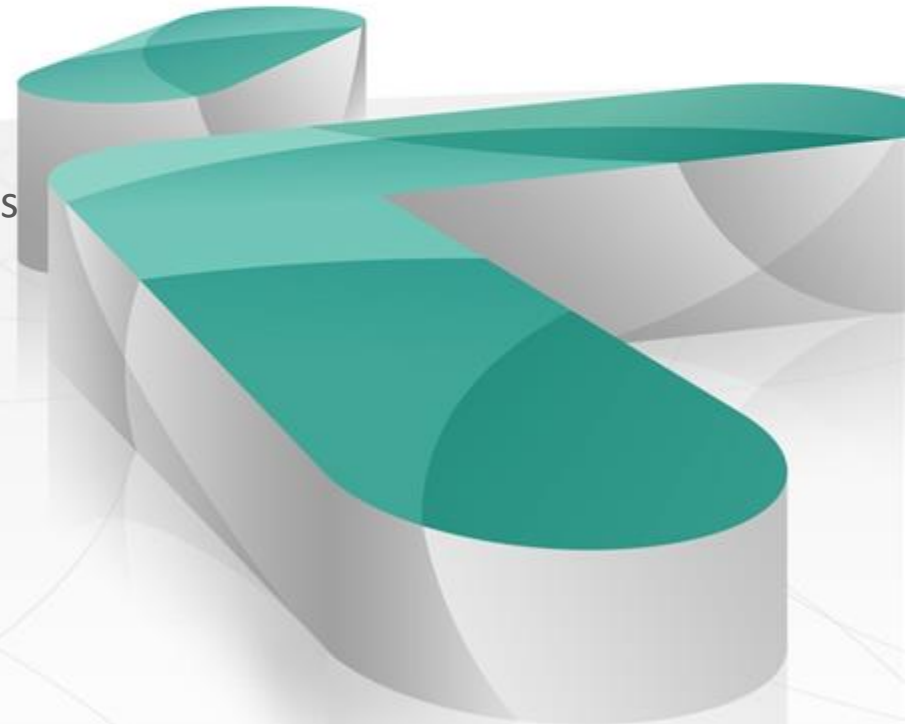


# Applied Research at Lithuanian Colleges/UAS: Challenges, Possibilities and Barriers

**PhD Nijolė Zinkevičienė,**  
**PhD Giedrė Adomavičienė**  
Kauno Kolegija/University of Applied Sciences

Applied Sciences Forum  
Internationalisation and Development  
20-11-2013



# Relevance of the topic.

## Why should we discuss it?

- Strategic provisions – new challenges:
  - EU policy – „Europe 2020“, „HORIZON 2020“, professionally oriented „knowledge triangle“;
  - Internationalization of applied research;
- Relevance of systematic assessment of applied research in Lithuanian HE.
  - ✓ International assessment : UAS'net; U-Multirank.
  - ✓ National assessment: external assessment criteria (CQAHE), assessment criteria of the Research Council of Lithuania, Ministry of Education and Science, weekly journal „Veidas“.
- Disbalance between high requirements for applied research in HE and insufficient funding.



# U-Multirank

A multidimensional, user-driven approach to international ranking of higher education institutions based on empirical data.



- **Represented by 10 EU countries' national rectors' conferences:**

*Ireland (chair), Finland (vice-chair), Portugal, Lithuania, Estonia, Belgium, Denmark, the Netherlands, Switzerland and France;*

- **Work together to promote and strengthen the integration and contribution of the UAS sector within the research and innovation strategy of Europe.**

# Comparison of applied research assessment criteria:

## FUNDING

U-Multirank	UASnet	Lithuania
External sources		<b>Income from activities under contracts:</b> research, consultations, conferences, qualification development courses, artistic activity, etc.) ( <b>Ministry of Education and Science (MES), „Veidas“</b> ).
Private sources		<b>Consultations for business</b> (CQAHE)
Regional funds	<b>Alternative funds</b> (EC, Research institutes, projects, etc.)	<b>Contracts with Lithuanian and foreign subjects</b> (CQAHE)
International subsidies	<b>State allocations for applied research</b>	

## Comparison of applied research assessment criteria:

### PUBLICATIONS AND PRESENTATIONS (1)

U-Multirank	UASnet	Lithuania
		Research monograph, collected research work, (CQAHE, RCL)
Number of publications for one academic staff member	Number of research publications	Number of research publications (CQAHE)
Interdisciplinary publications		
High citation publications	Number of research publications in reviewed editions	Research articles in reviewed scientific periodicals (CQAHE, RCL)
		Articles in international or other data bases (CQAHE, RCL)
Publications in co-authorship with industry partners	Number of professional field publications	
Publications in co-authorship with regional partners		

## Comparison of applied research assessment criteria: **PUBLICATIONS AND PRESENTATIONS**

U-Multirank	UASnet	Lithuania
International publications in co-authorship with foreign authors		
		Articles in the materials of conferences organized in foreign countries (CQAHE)
		Articles in the materials of conferences organized in Lithuania (CQAHE)
	Number of professional field publications	
	Number of research presentations	Presentations in scientific-practical conferences (CQAHE)
		Students' presentations in scientific-practical conferences (CQAHE)
	Media publications	

# Comparison of applied research assessment criteria:

## PATENTS, ARTEFACTS

U-Multirank	UASnet	Lithuania
Patens per one academic staff member	Number of new patents	
Common patents with industry partners per one academic staff member		
	Number of new licences	
	Number of continuous professional training programmes based on performed research	
Number of „start-ups“ (in 3 years)	„Start-ups“, organizations established by students (active for at least 3 years)	
	New firms beside UAS („spin-offs“) (active for at least 3 years)	Proffit-making enterprises/organizations established at coolege ( <i>Spin-offs</i> ) (CQAHE)
Art results	Number of prizes and awards	Artistic activity in Lithuania and abroad (number of visual art works) (CQAHE)



## Comparison of applied research assessment criteria: **COMPLIANCE BETWEEN STUDIES AND RESEARCH**

U-Multirank	UASnet	Lithuania
Final thesis on regional industry topics		<b>NOTE:</b> <i>Assessed as a criterion of studies and life-long learning:</i>
Graduates employed in the region, %		
Practice in regional enterprises		
Students' satisfaction (survey) <ul style="list-style-type: none"><li>• Research oriented studies;</li><li>• Work/practice elements.</li></ul>		

## Focus on:

- Income from applied research;
- Compliance between applied research and studies;
- Practical application of applied research results;
- Common applied research with social partners;
- Purposeful dissemination of applied research results and its impact on regional development.

# SITUATION ANALYSIS: COLLEGES' ANNUAL SELF-ASSESSMENT REPORTS

THE AIM –  
TO DEFINE THE ASSESSMENT CRITERIA OF APPLIED RESEARCH AT THE STATE COLLEGES/UAS OF  
LITHUANIA.

## The most frequently used

- **Quantitative indicators:**

- Income from experimental development (Lt);
- Number of research/art events (conferences);
- Number of publications;
- Number of expert activities of academic staff;
- Number of defended dissertations;
- Number of students' applied research/art events;
- Number of contracts with businesses;
- Research/art production.

- **Qualitative indicators:**

- Research trends;
- Conformity of applied research/art and study programme;
- Compliance between studies and research.

# Problematic aspects

- Fragmentarity of applied research/art assessment in the college/UAS sector.
- Different institutions require different data and information:
  - ▶ External institutional and study programme assessment (CQAHE)
  - ▶ „Veidas“ ranking;
  - ▶ Experimental development assessed by the Ministry of Education and Science;
  - ▶ International assessment criteria: (UASnet; U-Multirank, etc.);
  - ▶ Requirements of academic staff accreditation and job competition.

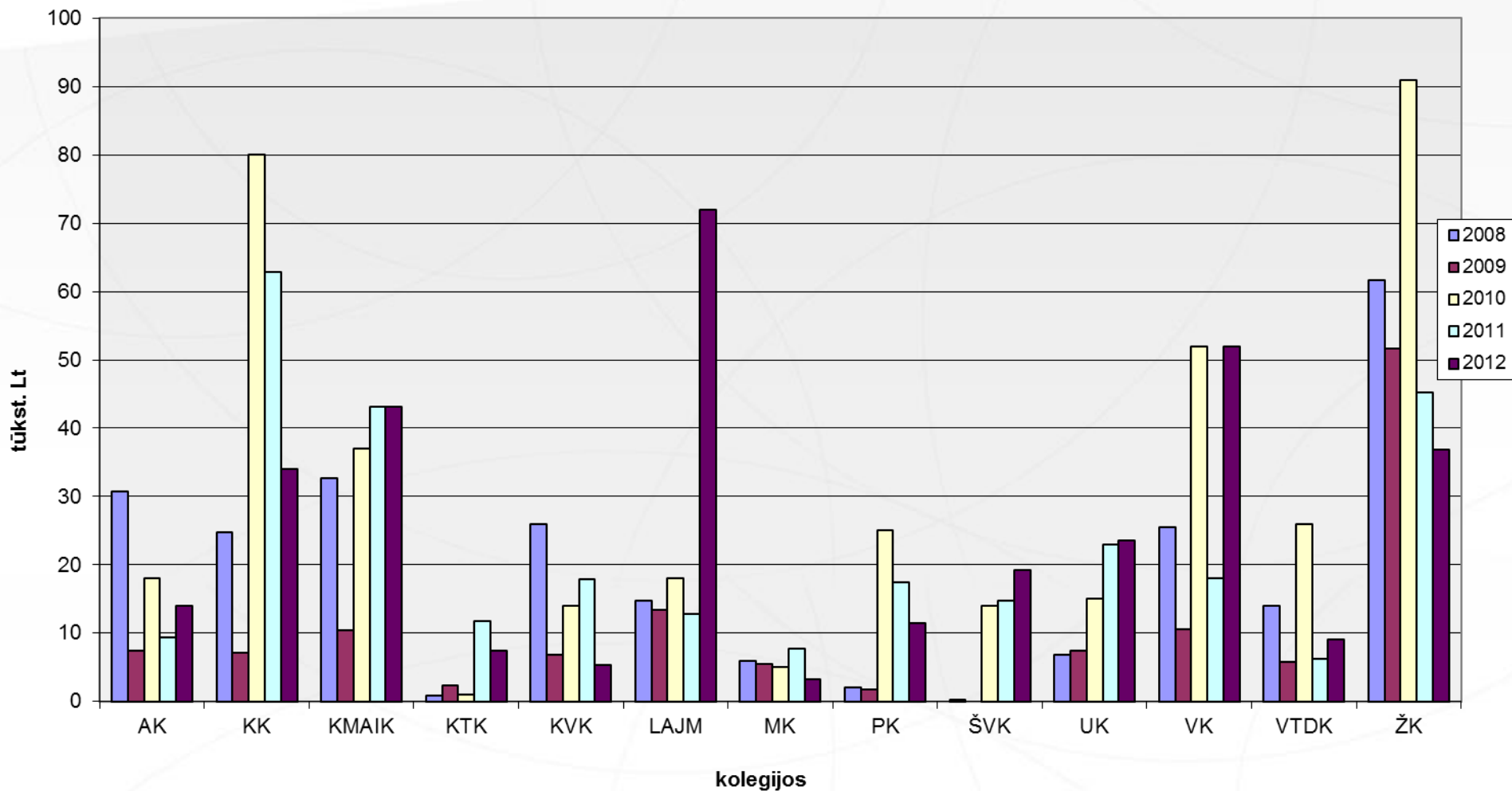
# **FUNDING OF APPLIED RESEARCH/ART AT COLLEGES/UAS OF LITHUANIA:**

## **DATA ON EXPERIMENTAL DEVELOPMENT AT COLLEGES/UAS OF LITHUANIA** (PROVIDED BY THE MINISTRY OF EDUCATION AND SCIENCE).

## MES financial allocations

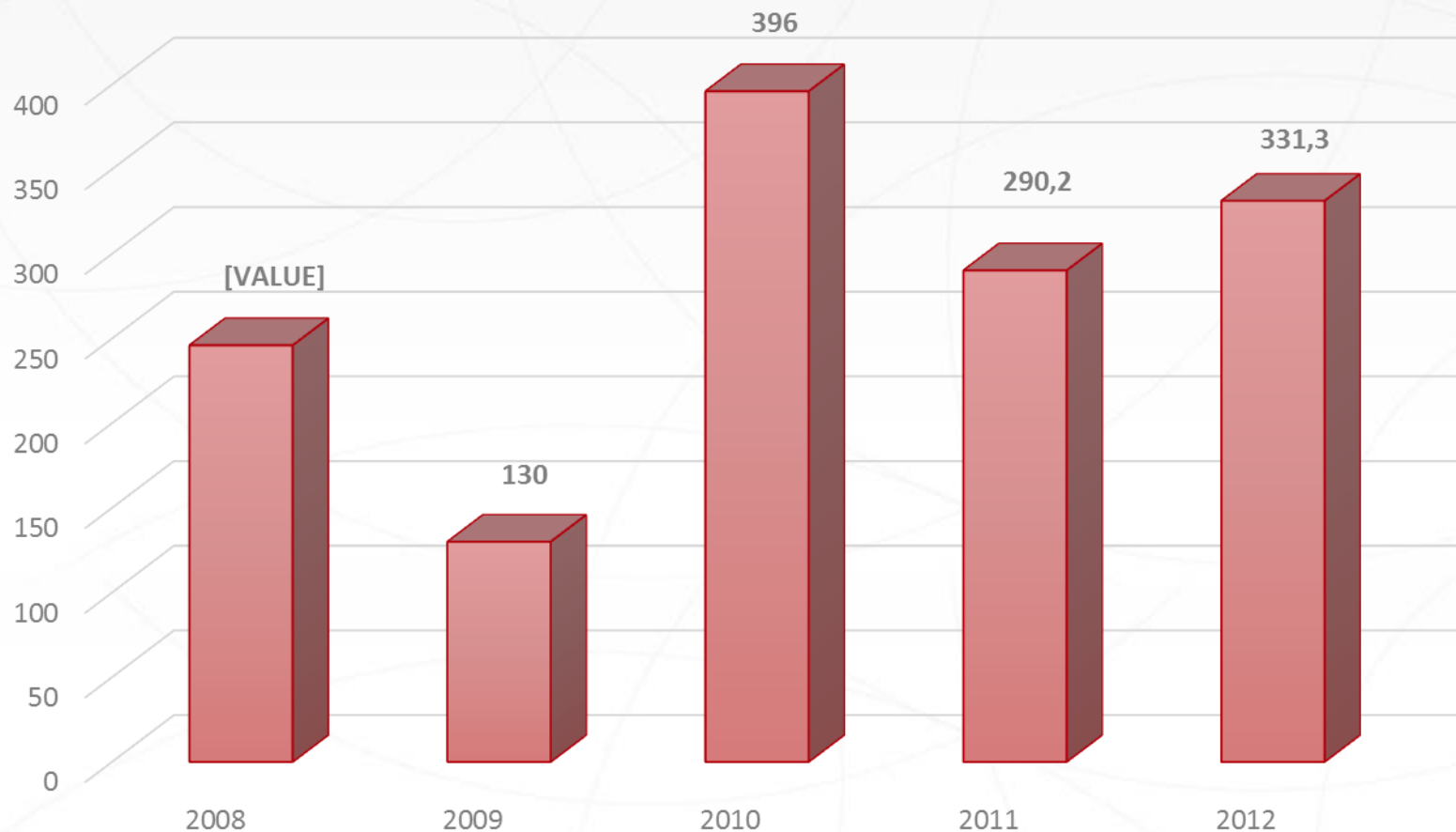
Activity	Relative allotment of resources (%)
Supervision, analysis, research studies, applied art.	40
Consultations	20
Seminars, qualification development courses	30
Project activity	10

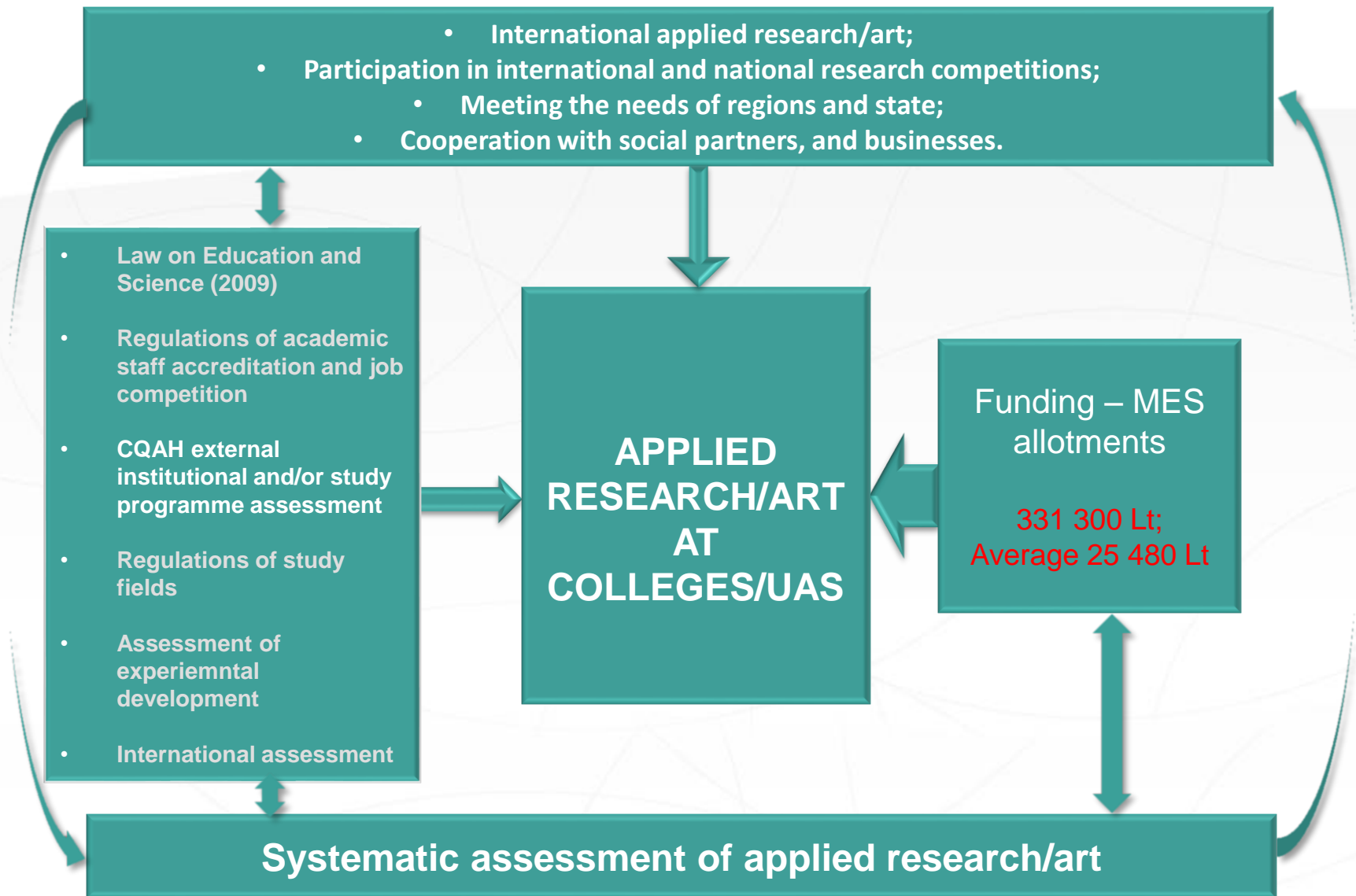
# Experimental development at colleges/UAS 2008-2012





## LR budget allocations for promotion of state colleges' experimental (social, cultural) development, regional development projects, consulting activity 2008-2012





# Thank you 😊

- PhD Nijolė Zinkevičienė, [nijole.zinkeviciene@go.kauko.lt](mailto:nijole.zinkeviciene@go.kauko.lt)
- PhD Giedrė Adomavičienė, [giedre.adomaviciene@go.kauko.lt](mailto:giedre.adomaviciene@go.kauko.lt)